

1. Introduction

This system uses the electrically induced technology to activate and deactivate the flow of the water. It is convenient and efficient to operate, having strong anti-interference and low power consumption ability which will extend the product life.

2. Features

Touch Function: Touch the faucet to activate and deactivate the flow.

Safety Protection: The system will automatically deactivate the flow when exceeds the restricted time(180 second).

Separate Design: Control system and faucet body are separated of the convenience of installation and maintenance.

Low Power Consumption: Battery powered, 4AA alkaline batteries can be used for more than one year.

3. System Parameter

Control time	<0.5s	Power supply	4 AA batteries
Auto Switching off time	180s	Standby power consumption	<0.1mA
Waterproof level	IPX5	Water temperature	0 °C -75 °C
Resistant intensity	16bar	Minium water pressure	0.7bar

4. Installation Requirements

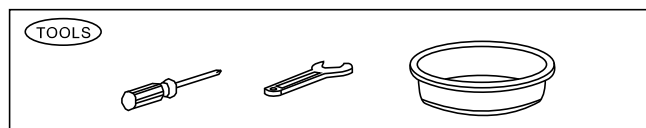
The battery box should be lean against the wall or on the ground. Cable should not be intertwined.

5. Way to Control the Operation

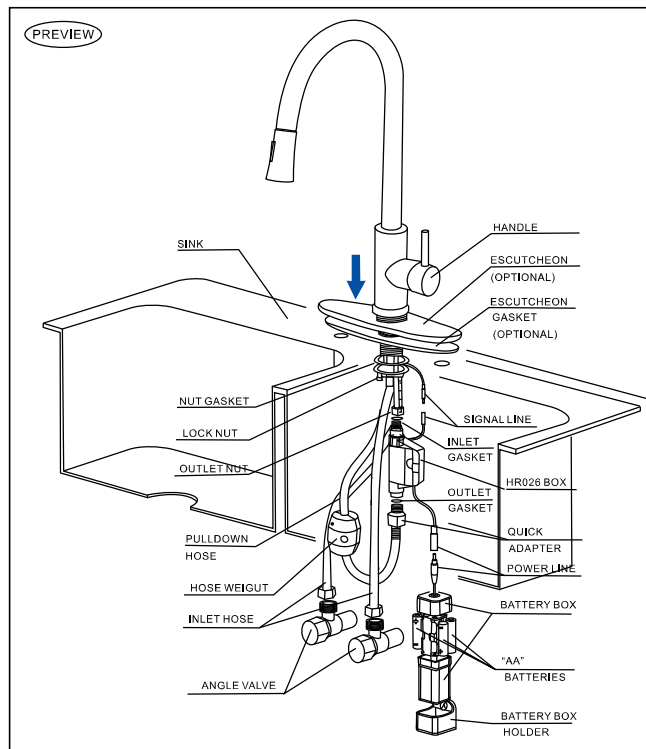
The time between touching and leaving the faucet should not exceed 300ms. Touch once to activate the flow, and touch again to deactivate the flow.

6. Installation Schematic Diagram

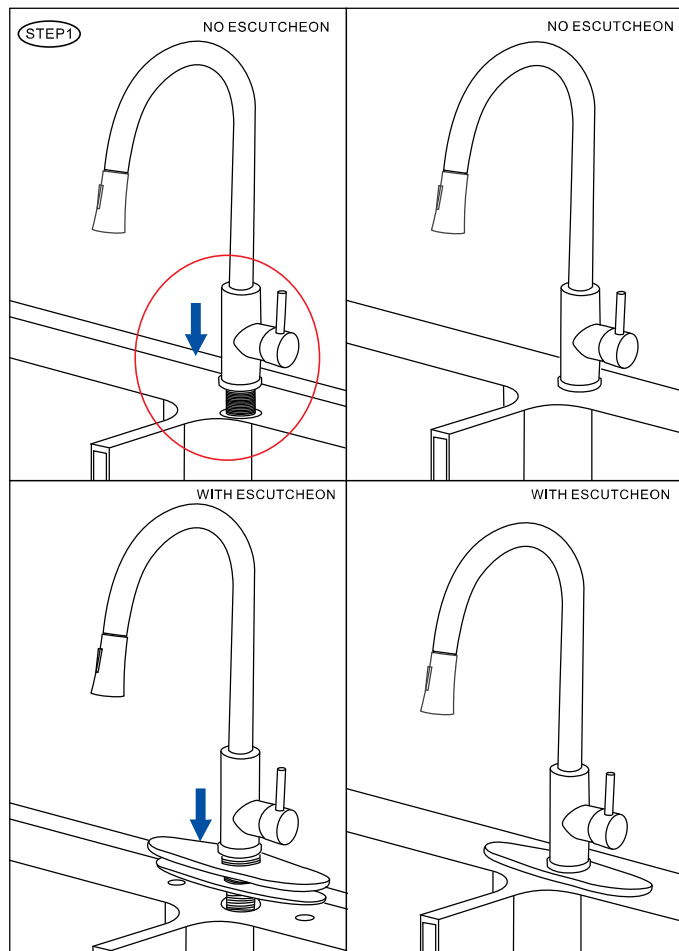
You need tools:



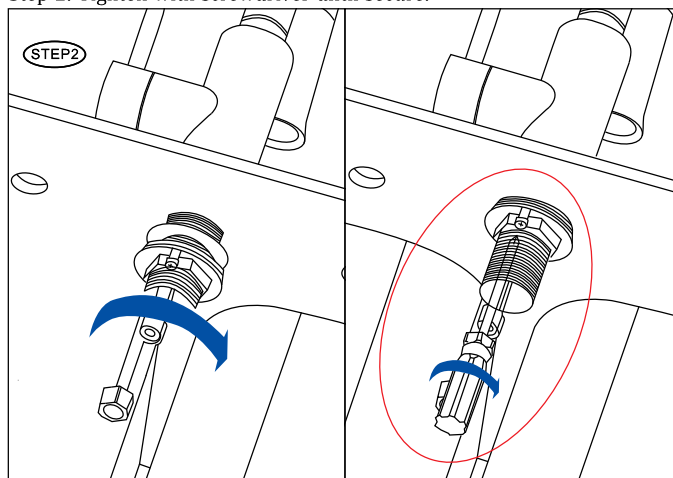
Preview:



Step 1: Install and fix the faucet.



Step 2: Tighten with screwdriver until secure.



Step 3: Attach hot and cold inlet hose to faucet and angle valves.

